



32 JUNIPER RIDGE

www.canmore realestate.com/32-juniper-ridge

PRESENTED BY
HAWKER-BETTS
REAL ESTATE TEAM

ROYAL LEPAGE
SOLUTIONS



PRESENTED BY
HAWKER-BETTS
REAL ESTATE TEAM

ROYAL LEPAGE
SOLUTIONS



Situated on one of Silvertip's largest sites at the end of a cul-de-sac with sweeping mountain and valley views all adjacent to nature is a superb, contemporary, almost 5,000 sq ft home. Abundant outdoor living space is seamlessly integrated with the great room that allows for you have easy access to both of the huge patios. Inside, the blending of light and modern mountain finishing is felt throughout the spacious open living room, dining and kitchen area. Your guests will enjoy their conversations with you while you create in the masterfully designed kitchen. The top floor has the primary bedroom and immense spa inspired ensuite, as well as a family room or office area, all with vaulted ceilings and panoramic views. Also on this top floor, a 2nd bedroom with ensuite, one of the laundry locations of the home and 2 balconies. The walkout lower-level has a 2nd office or rec room with a bath, sauna, wine cellar, 2nd laundry area and an oversized double car garage with ski tuning work bench. Also on this level is a fully self-contained 1 bedroom and den suite with a full kitchen to give your guests/family some freedom and independence, all with polished concrete heated floors. Other features are the triple glazed windows, stainless steel and maple doors and featured glass and steel staircase. Please view the virtual tour slowly to appreciate all the amazing aspects of this custom home or come and view it in person soon!



4,998 SQ FT



DOUBLE GARAGE



3+ BEDROOMS



4 BATHS



KITCHEN

The masterfully designed kitchen is a chef's dream. Grab your guests a glass of wine as they enjoy their conversations with you while you create your culinary delights.



DINING ROOM

This home feels warm & comforting for a large family gathering or an intimate dinner for 2.



LIVING ROOM

The blending of light & modern mountain finishing is felt throughout the spacious open living room, dining & kitchen area.



ENJOY THE VIEW

Abundant outdoor living space is seamlessly integrated with the great room that allows for you have easy access to both of the huge patios.



PRIMARY BEDROOM

The top floor has the primary bedroom & immense spa inspired ensuite.





PRIMARY ENSUITE

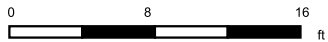
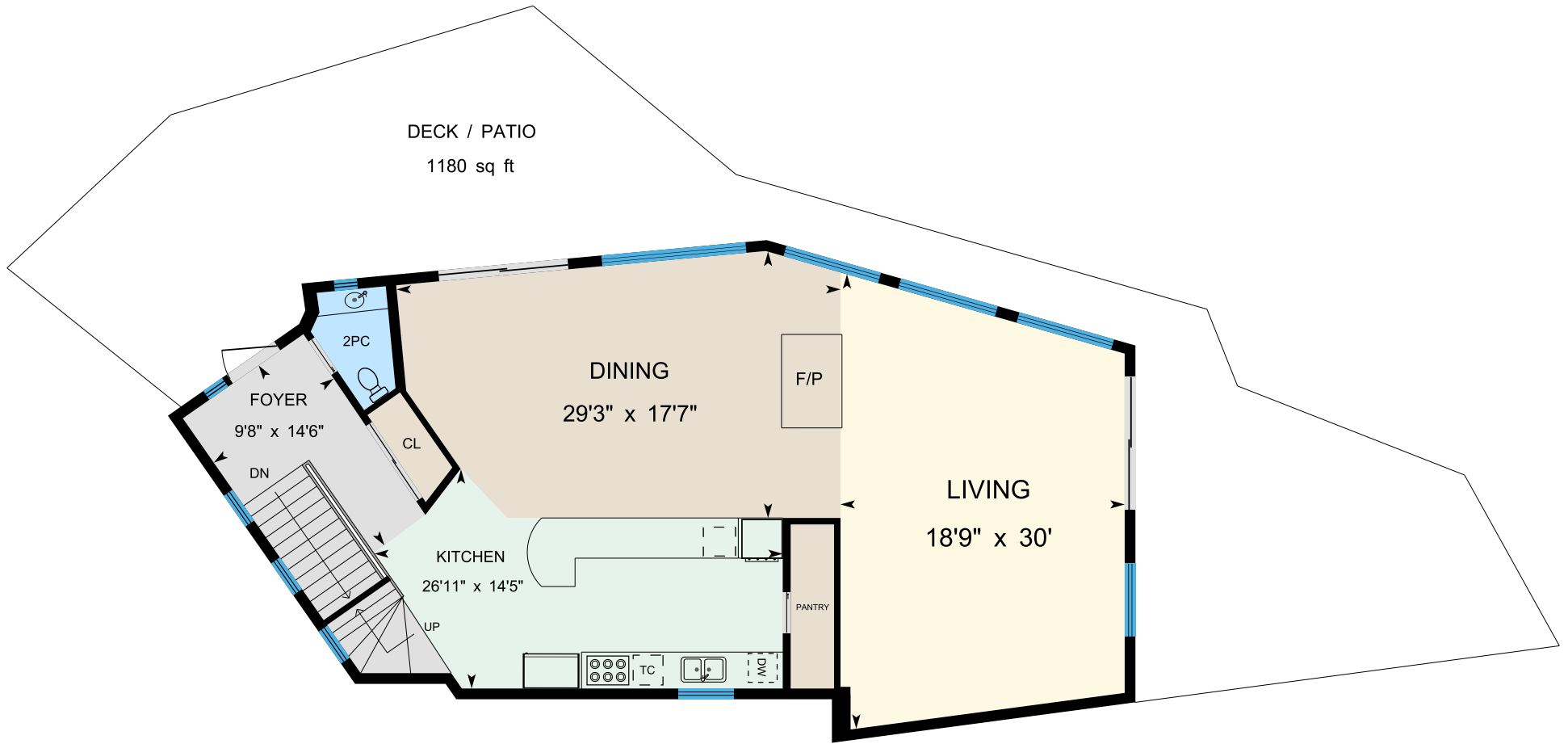
A relaxing ensuite with double vanity, steam shower, & jet tub.



WALKOUT LEVEL

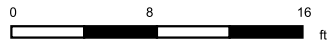
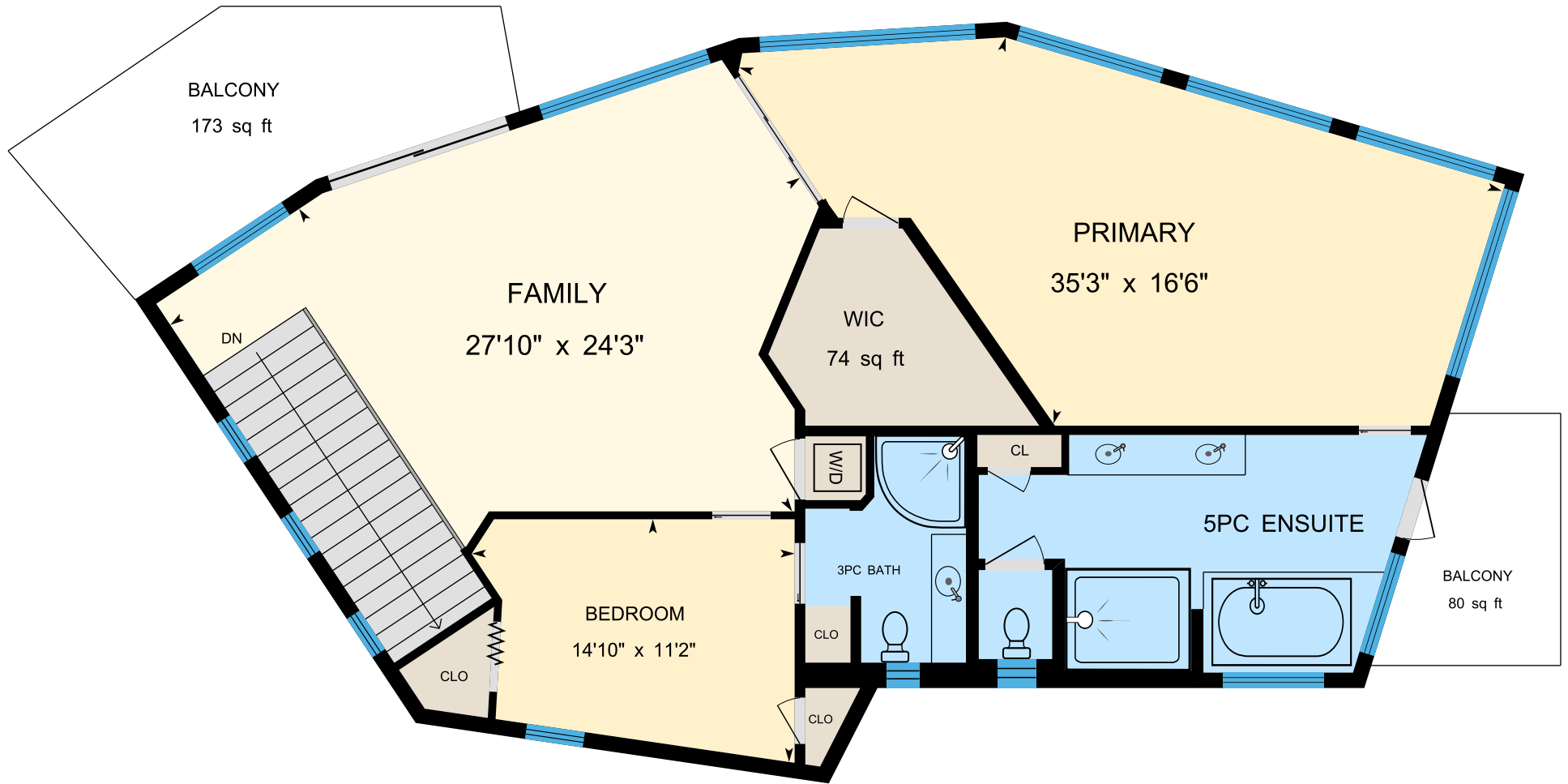
The walkout lower-level has a 2nd office or rec room with a bath, sauna, wine cellar & 2nd laundry area. Also on this level is a fully self-contained 1 bedroom & den suite with a full kitchen.





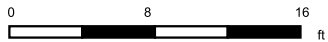
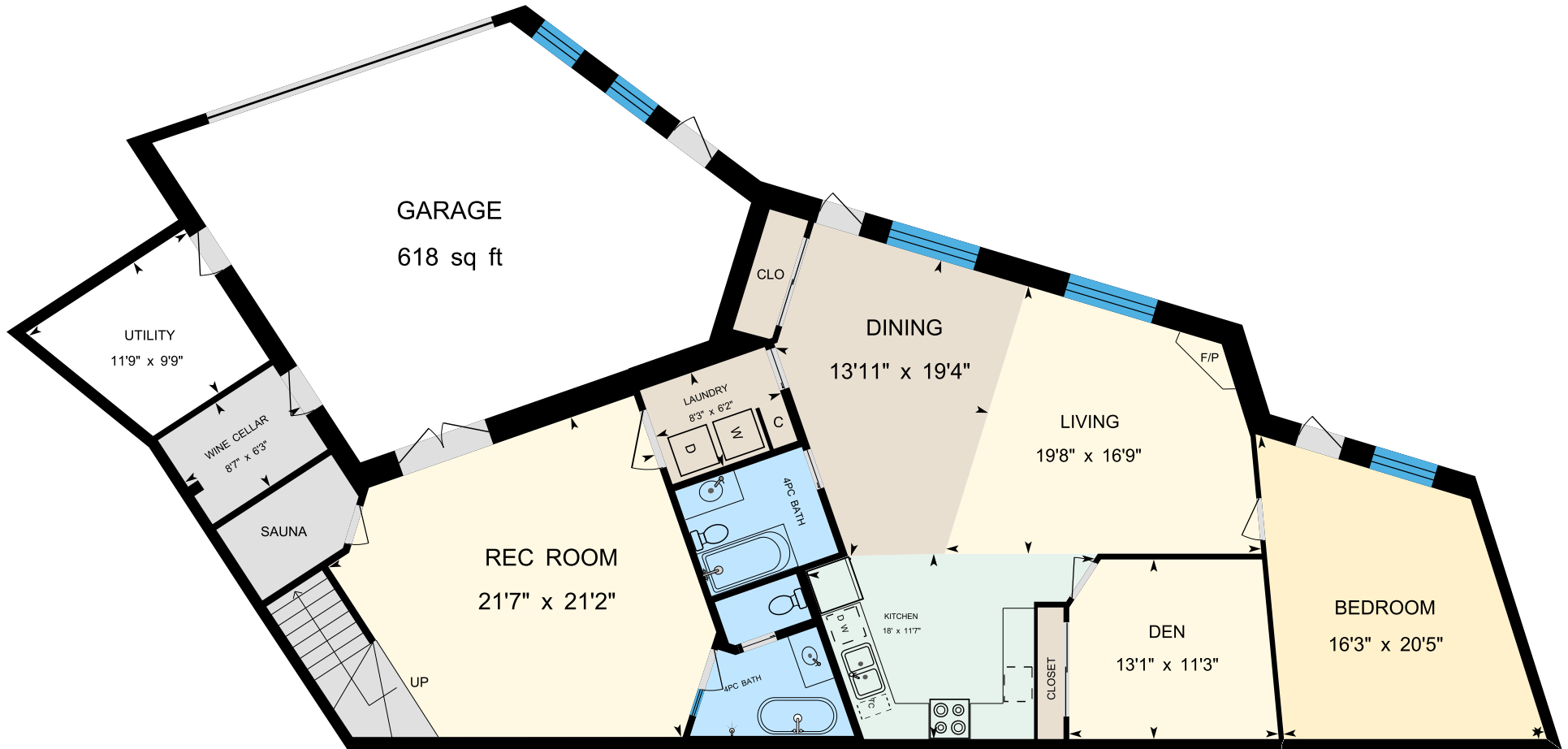
MAIN FLOOR





UPPER FLOOR





LOWER FLOOR



PRESENTED BY
HAWKER-BETTS
REAL ESTATE TEAM

ROYAL LePAGE
SOLUTIONS

32 Juniper Ridge
Neighbourhood: **Silvertip**



BRAD HAWKER
Associate Broker
REALTOR®



DREW BETTS
Associate Broker
REALTOR®



CANMOREREALESTATE.COM

PHONE 403-678-7557 TOLL-FREE 1-877-818-7557 EMAIL info@CanmoreRealEstate.com

